

Apartment 5

Living/Bedroom 4.87m (15'11") x 3.56m (11'8")
Kitchen 2.3m (7'6") x 2.0m (6'6 1/2")
Bathroom 2.3m (7'6") x 1.72m (5'6")
Mezzanine Area 2.4m (7'10") x 1.8m (5'10")

Kitchen
 Laminate flooring.
 Integrated oven, fridge, and washer dryer.
 Howdens fully fitted kitchen.

Bathroom
 Laminate flooring.
 Thermostatic shower to 900mm x 900mm shower unit.
 Attractive vanity unit.

Living room
 Quality carpets laid over dense sound deadening underlay.
 Period feature fireplace.
 Vaulted ceiling feature and skylights (also over mezzanine area).

Access via stair ladder to mezzanine work/store area.

 Accessed via attractive steel semi-spiral stairway from main courtyard.

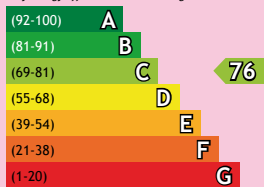
Heating Electric
Covered storage for residents bicycles.
Refuse bin storage area.

Reserved parking in nearby private car park available on an annual rented basis.

Maintenance charge and sinking fund of £600 p.a.
Ground rent £100 p.a.

Energy Efficiency Rating

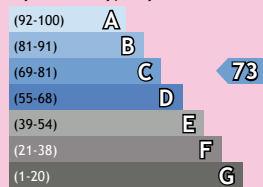
Very energy efficient - lower running costs



Not energy efficient - higher running costs

Environmental Impact (CO2) Rating

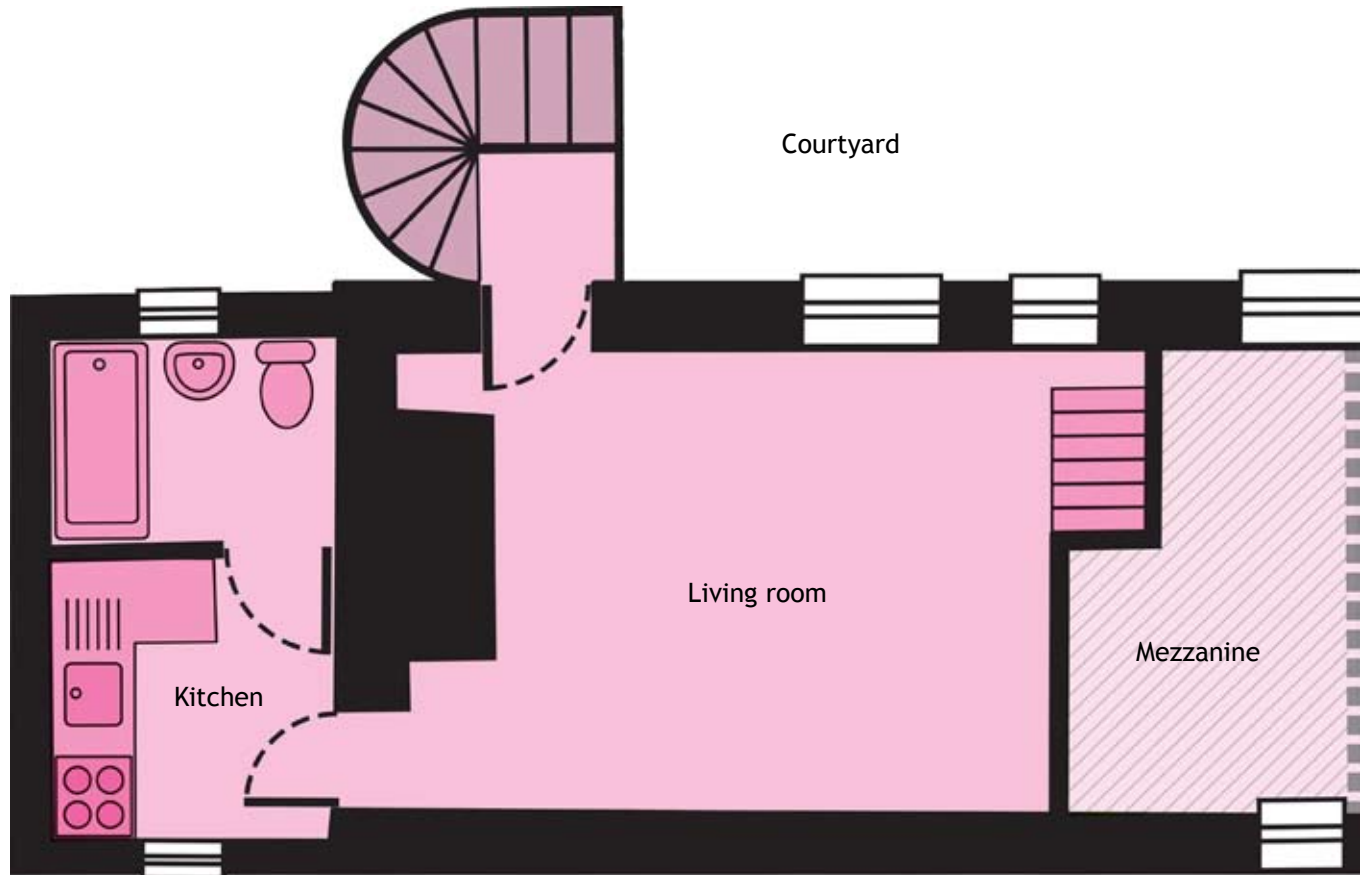
Very environmentally friendly - lower CO2 emissions



Not environmentally friendly - higher CO2 emissions

The energy efficiency rating is a measure of the overall efficiency of a home. The higher the rating the more energy efficient the home is and the lower the fuel bills are likely to be.

The environmental impact rating is a measure of a home's impact on the environment in terms of carbon dioxide (CO2) emissions. The higher the rating the less impact it has on the environment.



Not to scale and is for information purposes only.

Disclaimer:

These particulars are intended as a preliminary guide to prospective purchasers and should not be relied upon. Details of materials and design treatments may vary. The room sizes given are approximate overall finished room sizes and subject to normal building tolerances. When described as "max" this dimension is the longest available in that direction in that room. In all instances purchasers are advised to inspect plot specific information which is available from our sales team. Nothing in these particulars or verbal assurance shall form part or constitute a part of any contract, and are given without any responsibility on behalf of the developer.